

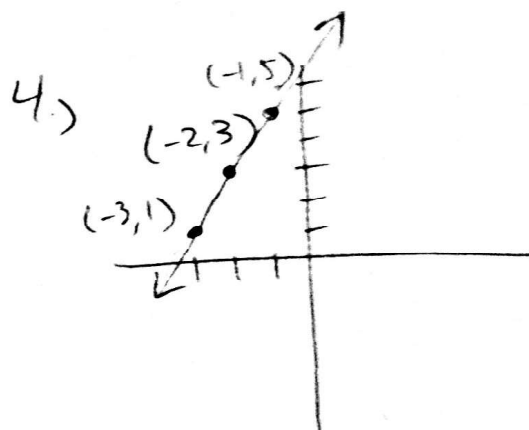
Ch 6 Review

Part 1

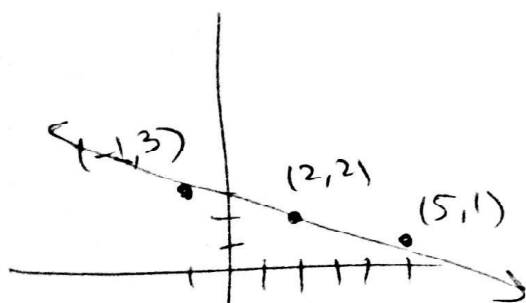
- 1) A +ve
 B zero
 C undefined
 D -ve

- 2) $A \Rightarrow 5$
 $B \Rightarrow -\frac{1}{5}$
 $C \Rightarrow \frac{1}{2}$

- 3) a) $m = 2$
 b.) $m = -2$



5.)



6.) $m_{AB} = \frac{9}{8}$ $m_{CD} = -\frac{1}{2} \Rightarrow$ not \perp

7. a) slope = 2 y-int = 3
 b) slope = $-\frac{2}{3}$ y-int = -3
 c.) slope = 0 y-int = 6

- 8.) slope = 3 point (4, -2)
 b) slope = $\frac{1}{2}$ point (-2, 0)

9) a) $y = -2x + 3$ b) $y = -\frac{2}{3}x$

10) a) $y + 3 = 3(x - 2)$ b) $y = x$

11) $y - 5 = 2(x - 4)$

12) a) $y - 5 = 2(x + 2)$ b) $y + 3 = -\frac{1}{2}(x - 2)$

13) $y = 3x + 5$ 14) $y = \frac{2}{3}x - \frac{7}{3}$

15) $y = \cos t$ $x = \text{time}$

a) $y - 14 = \frac{1}{2}(x - 20)$

b) $y = \frac{1}{2}x + 4$

16) a) $2x - 3y - 2 = 0$ b) $2x + 2y - 3 = 0$

c) $x - 2y + 4 = 0$

17) a) $y = -2x + 4$ b) $y = 2x + 4$ c) $y = -\frac{2}{3}x + 2$

18) a) $(0, 4)$ and $(2, 0)$ b) $x\text{-int} = -3$
 $y\text{-int} = -2$

