

Extremas and Zeros Quiz

Name: _____ Date: January 27, 2020

Thinking Strategies	Communication	Modelling & Solving

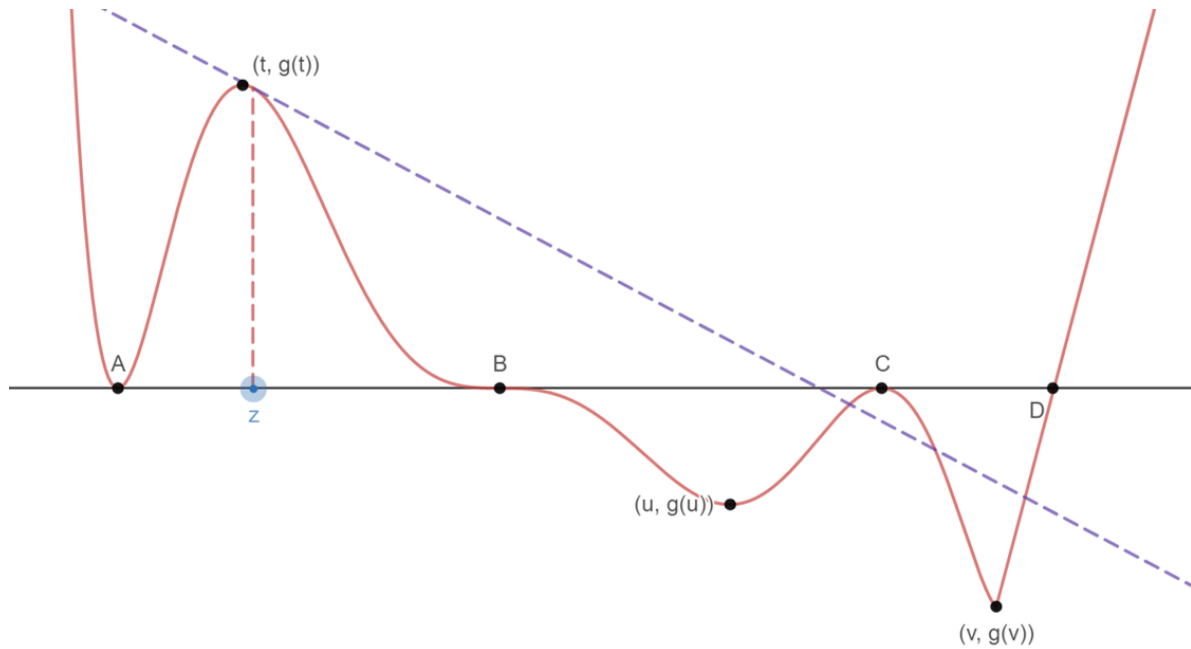
1. Consider the function

$$f(x) = 0.25x^4 - x^3 + 2$$

(a) Find all extremas for f on the interval $[-2, 4]$.

(b) Find all the zeros of f . Give an argument why you know you won't find more than 2 zeros.

2. Consider the graph of the function g below.



(a) If the point z is chosen as an initial guess to a zero using Newton's method, what zero will be found? Give a brief explanation why you think that.

(b) If $g(x) = h'(x)$ for some function h , then at what values of x will h have local maximums? Give a brief explanation why you think that.